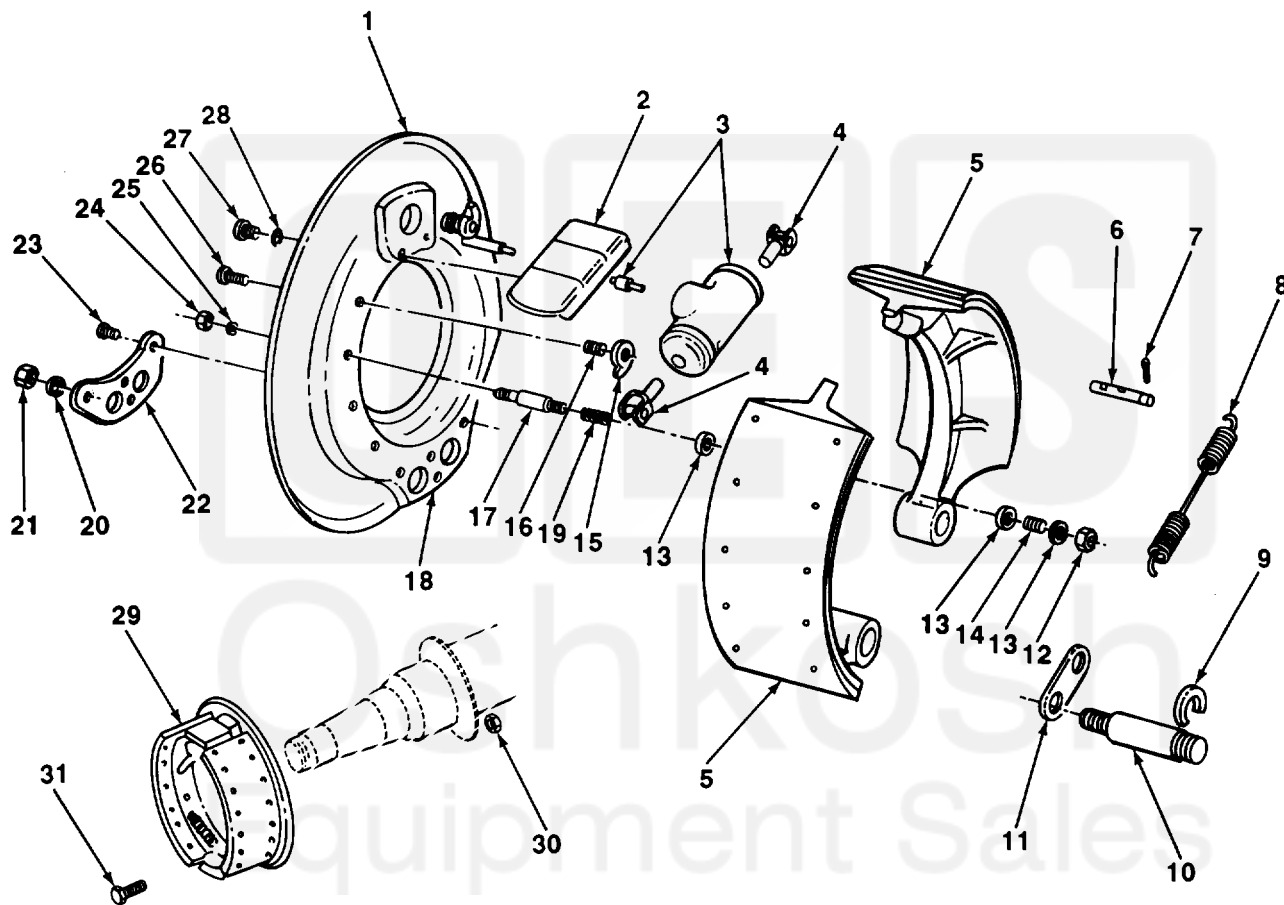


SECTION II

TM 9-2330-246-24P



TA506017

FIGURE 24. SERVICE BRAKES, OPTIONAL SYSTEM.

| SECTION II | | | | TM9-2330-246-24P | | |
|---|----------|-------|-------------|---|-----|--|
| (1) | (2) | (3) | (4) | (5) | (6) | |
| ITEM NO | SMR CODE | CAGEC | PART NUMBER | DESCRIPTION AND USABLE ON CODES (UOC) | QTY | |
| GROUP 1202 SERVICE BRAKES | | | | | | |
| FIG. 24 SERVICE BRAKES, OPTIONAL SYSTEM | | | | | | |
| 1 | PAOZZ | 19207 | 8758357 | DEFLECTOR, DIRT AND | 2 | |
| 2 | PAOZZ | 19207 | 7409323 | COVER, ACCESS BRAKE ASSEMBLY | 2 | |
| 3 | PAOZZ | 19207 | 8758259 | CYLINDER ASSEMBLY, H SERVICE BRAKE OPTIONAL SYSTEM) | 2 | |
| 4 | PAOZZ | 19207 | 7413486 | LINK, WHEEL CYLINDER SERVICE BRAKE (OPTIONAL SYSTEM) | 4 | |
| 5 | PAOZZ | 19207 | 5705700 | BRAKE SHOE SET, INTE WITH LINING (OPTIONAL SYSTEM) | 4 | |
| 6 | PAOZZ | 19207 | 7979330 | PIN, GROOVED, HEADLES RETURN SPRING (OPTIONAL SYSTEM) | 4 | |
| 7 | PAOZZ | 96906 | MS24665-283 | PIN, COTTER RETURN SPRING (OPTIONAL SYSTEM) | 8 | |
| 8 | PAOZZ | 19207 | 7979339 | SPRING, HELICAL, EXTE BRAKE SHOE RETURN (OPTIONAL SYSTEM) | 2 | |
| 9 | PAOZZ | 19207 | 7979332 | WASHER, SLOTTED C-TYPE, BRAKE SHOE RETURN (OPTIONAL SYSTEM) | 4 | |
| 10 | PAOZZ | 78500 | 7979271 | PIN, SHOULDER, HEADLE BRAKE SHOE MOUNTING (OPTIONAL SYSTEM) | 4 | |
| 11 | PAOZZ | 19207 | 7979340 | LINK, ANCHOR, BRAKE S BRAKE SHOE RETURN (OPTIONAL SYSTEM) | 2 | |
| 12 | PAOZZ | 19207 | 11663236 | NUT, SELF-LOCKING, HE BRAKE SHOE ATTACH (OPTIONAL SYSTEM) | 4 | |
| 13 | PAOZZ | 19207 | 11663232 | WASHER, RECESSED BRAKE SHOE ATTACH (OPTIONAL SYSTEM) | 12 | |
| 14 | PAOZZ | 19207 | 11663233 | SPRING, HELICAL, COMP BRAKE SHOE (OPTIONAL SYSTEM) | 4 | |
| 15 | PAOZZ | 19207 | 5282725 | CAM, ADJUSTING, BRAKE BRAKE SHOE ADJUSTING (OPTIONAL SYSTEM) | 4 | |
| 16 | POAZZ | 78500 | 2758C3 | SPRING, HELICAL, COMP BRAKE SHOE ADJUSTING (OPTIONAL SYSTEM) | 4 | |
| 17 | PAOZZ | 19207 | 11663231 | PIN, BRAKE, MOUNTING (OPTIONAL SYSTEM) | 4 | |
| 18 | PAOZZ | 19207 | 8758316 | PLATE, BACKING, BRAKE BRAKE SHOE (OPTIONAL SYSTEM) | 2 | |
| 19 | PAOZZ | 19207 | 11663025 | SPRING, HELICAL, COMP BRAKE SHOE (OPTIONAL SYSTEM) | 4 | |
| 20 | PAOZZ | 96906 | MS35338-51 | WASHER, LOCK PIVOT PIN ATTACH (OPTIONAL SYSTEM) | 4 | |
| 21 | PAOZZ | 19207 | 7207919 | NUT, PLAIN, HEXAGON PIVOT PIN ATTACH (OPTIONAL SYSTEM) | 4 | |
| 22 | PAOZZ | 19207 | 7979334 | BRACKET, ANCHOR PIN SHOE ANCHOR PIN (OPTIONAL SYSTEM) | 2 | |
| 23 | PAOZZ | 96906 | MS35743-76 | RIVET, SOLID BRACKET ATTACH (OPTIONAL SYSTEM) | 8 | |
| 24 | PAOZZ | 96906 | MS51968-8 | NUT, PLAIN, HEXAGON GUIDE PIN ATTACH (OPTIONAL SYSTEM) | 4 | |
| 25 | PAOZZ | 96906 | MS35333-42 | WASHER, LOCK GUIDE PIN ATTACH | 4 | |

